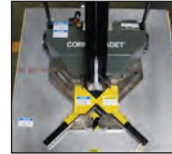
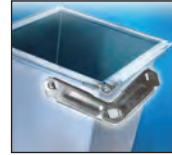


CORNER CADET® (PORTABLE)

Fast, easy corner insertion and crimping in ducts and fittings. Although the Corner Cadet® is portable and light in weight, it's heavy on performance, automatically inserting and crimping specially designed TDC® and TDF® corners in seconds. In addition to handling virtually every style of duct, the Corner Cadet® also works with multiple types of straight fittings. Automatic duct squaring. For ducts and fittings from 18 ga., 1.2 mm to 26 ga. and .6 mm galvanized mild steel. For angled fittings to 16 ga., 1.6 mm, please see the Cornermatic Plus® on page 31.



Model Details



6016 BEADER

Beading is a cost-conscious way to stiffen ductwork. It is 5 times faster than the old method, cross-braking, and uses only one operator. Designed to meet the requirements of SMACNA, this ductwork prep machine produces 5 beads on 12" centers and is adjustable to 3/16" depth. A convenient hand-wheel raises or lowers the top roll assembly to set depth of bead. The top and bottom rollers are kept parallel with adjustable screw and pillow block assemblies connected by a link chain. Individual adjustable screw and pillow block assemblies connected by a link chain. Individual collared beading rolls are replaceable. Feed rolls are self-compensating over the entire gauge range. Double entrance feed bars are provided so that material can be gauged from either left or right side.

With Lockformer® quality construction, this machine has an industrial electric motor; precision bearings; turned, ground, and polished steel forming rolls and roll shafts; and an arc-welded steel stand protected with Lockformer®'s top-quality primer and paint finish. Lubrication fittings are located on each bearing.

Model Details



MODEL	CAPACITY	DEPTH OF POCKET/SIZE	OTHER	SPEED	MOTOR/VOLTAGE	DIMENSIONS/WEIGHT
CORNER CADET®	18-26 gauge	N/A	N/A	N/A	110 volt, single phase, 60 cycle Air = 90 PSI	Length - 34.5" Width - 32" Height - 49.5" (top of handle) Platform - 48.5" x 48.5" Weight - 240 lbs.
6016 BEADER	16-30 gauge	N/A	N/A	30 fpm	3/4 H.P. 115/230 volts, 60 cycle, single phase, A.C. 1,800 RPM	Weight - 1650 lbs. Capacity: 16 gauge max. width 5 ft.