



5480 - Sixth Street S.W.  
Cedar Rapids, IA • 52404

319.364.9181



VISIT OUR WEBSITE:  
[www.mestekmachinery.com](http://www.mestekmachinery.com)



FREE CATALOG REQUEST



ELECTRONIC CATALOG



PREMIER PARTNER

The FIRST Premier Partner Program Member  
to Join this Elite Group

© COPYRIGHT 2016 | ALL RIGHTS RESERVED BY MESTEK MACHINERY  
MESTEK MACHINERY | YEAR AFTER YEAR IMPROVING DUCT FABRICATION PRODUCTIVITY FOR YOU | ENGEL COILINES | SPRING 2016

ENGEL

# Coilines

*Engel Industries Inc. has designed and built practical, cost-efficient equipment for over 50 years; providing solutions to a broad range of manufacturing problems. Customers depend on Engel for quality, heavy-duty, cost-effective machinery.*

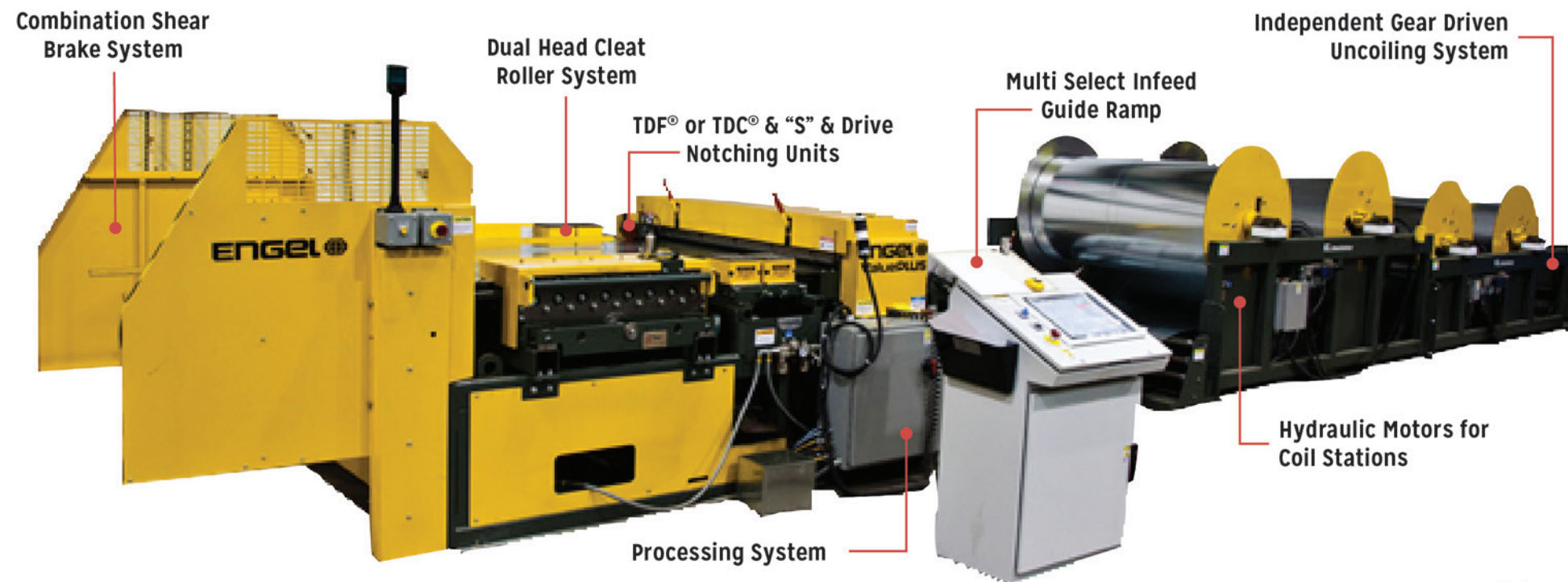




# ValuePlus2<sup>®</sup>

## Front End Starter & Space Saver Full Line with all options

From start to finish the ValuePlus2<sup>®</sup> Starter Full Coiline has been completely re-engineered to effortlessly deliver the power and precision that today's HVAC companies demand.



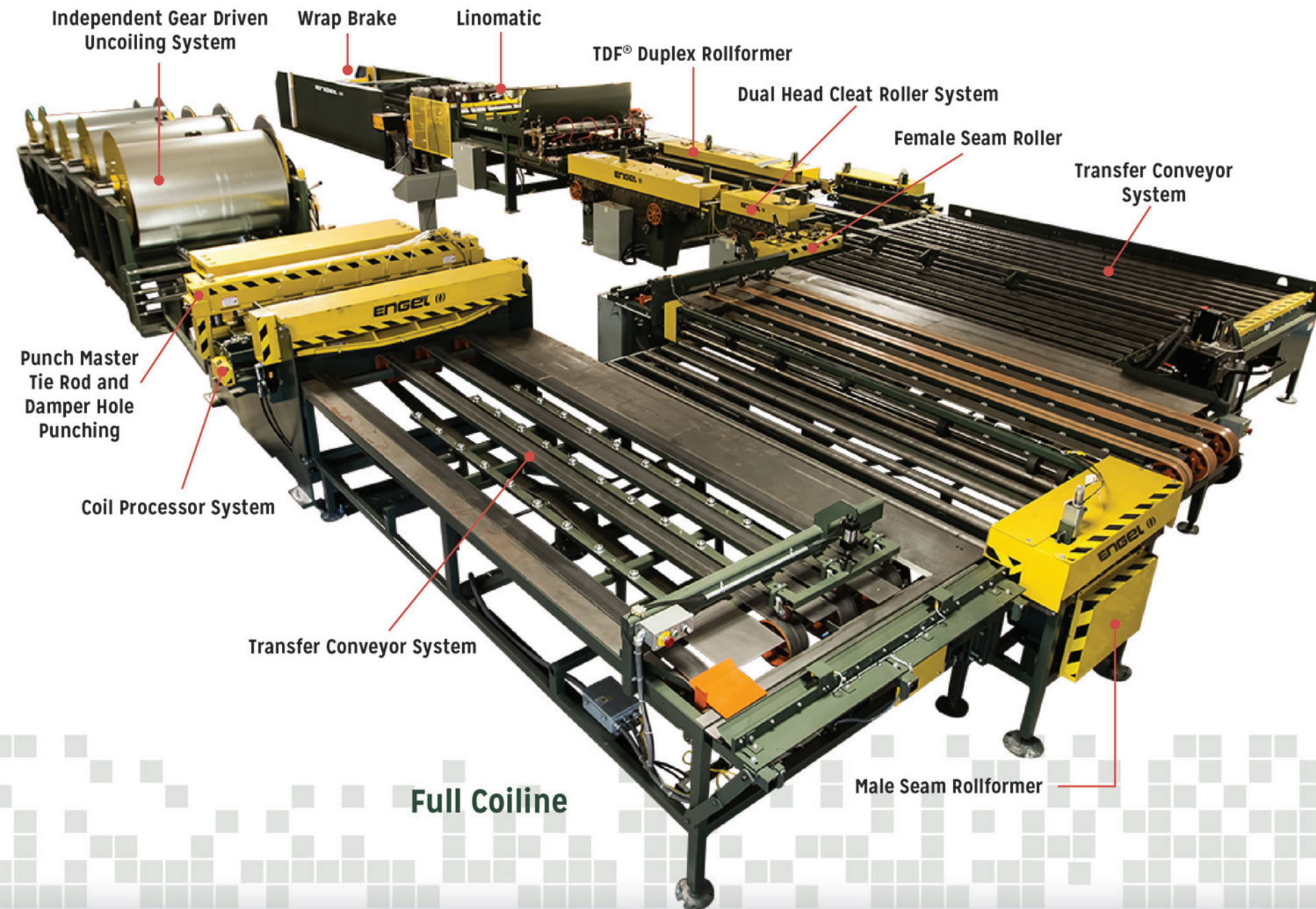
**Front End Starter Coiline**



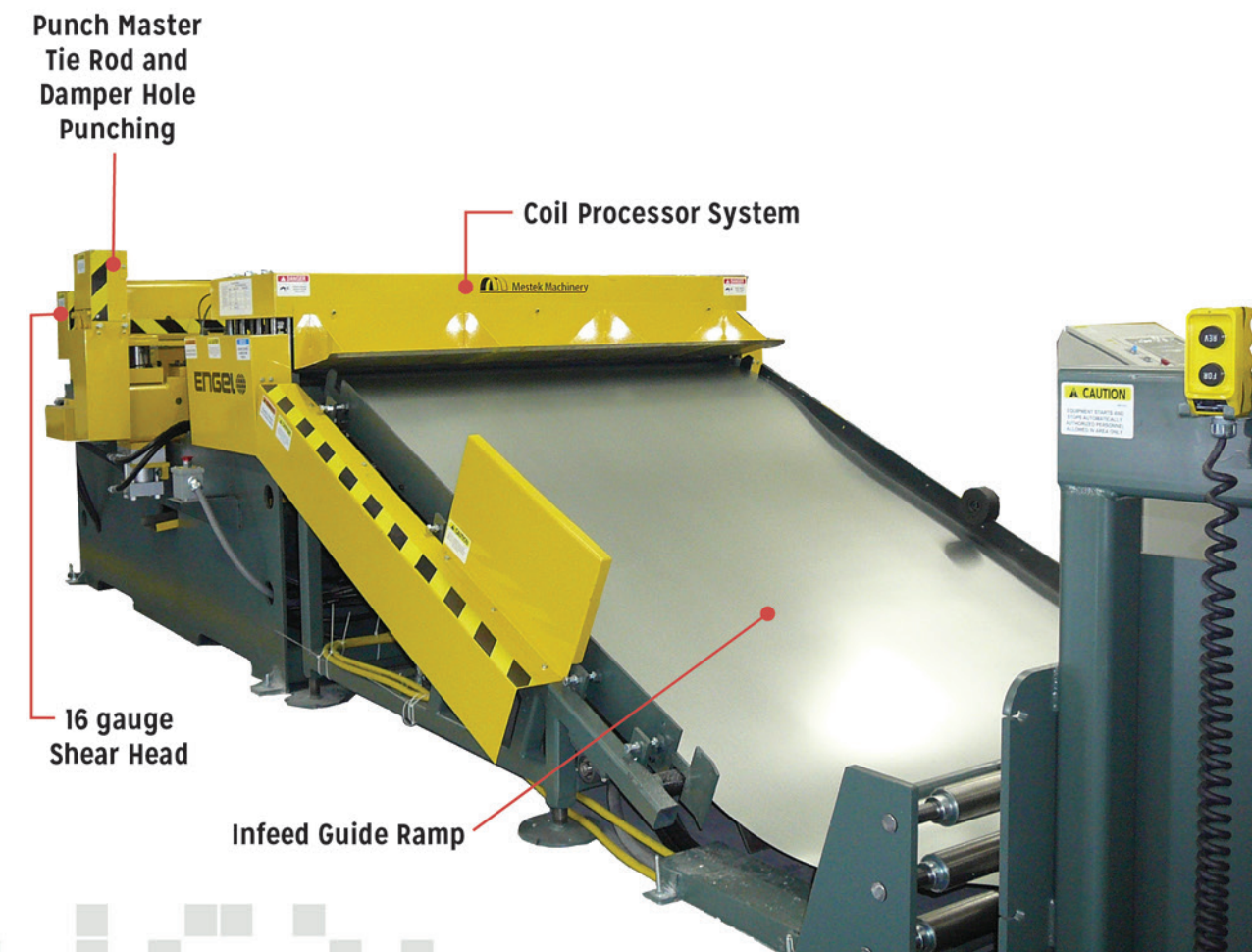
**Space Saver Full Coiline**

Completely re-engineered to effortlessly deliver the power and precision that today's HVAC companies demand





**Full Coiline**

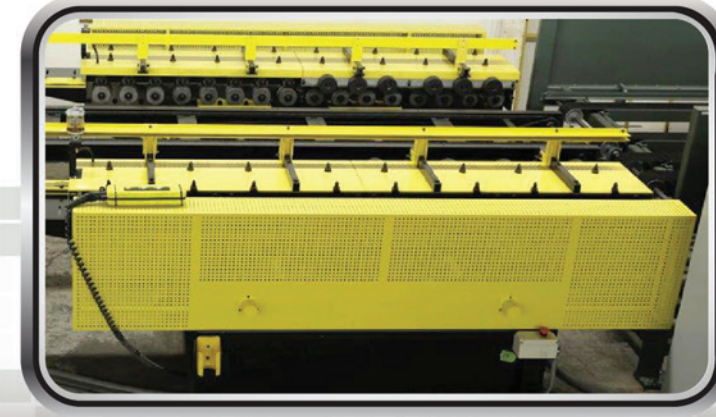
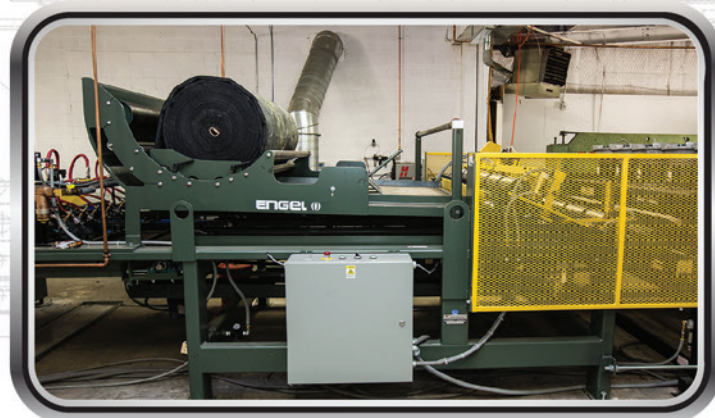


**Starter Coiline**

## Compact II Coiline Starter & Full Line

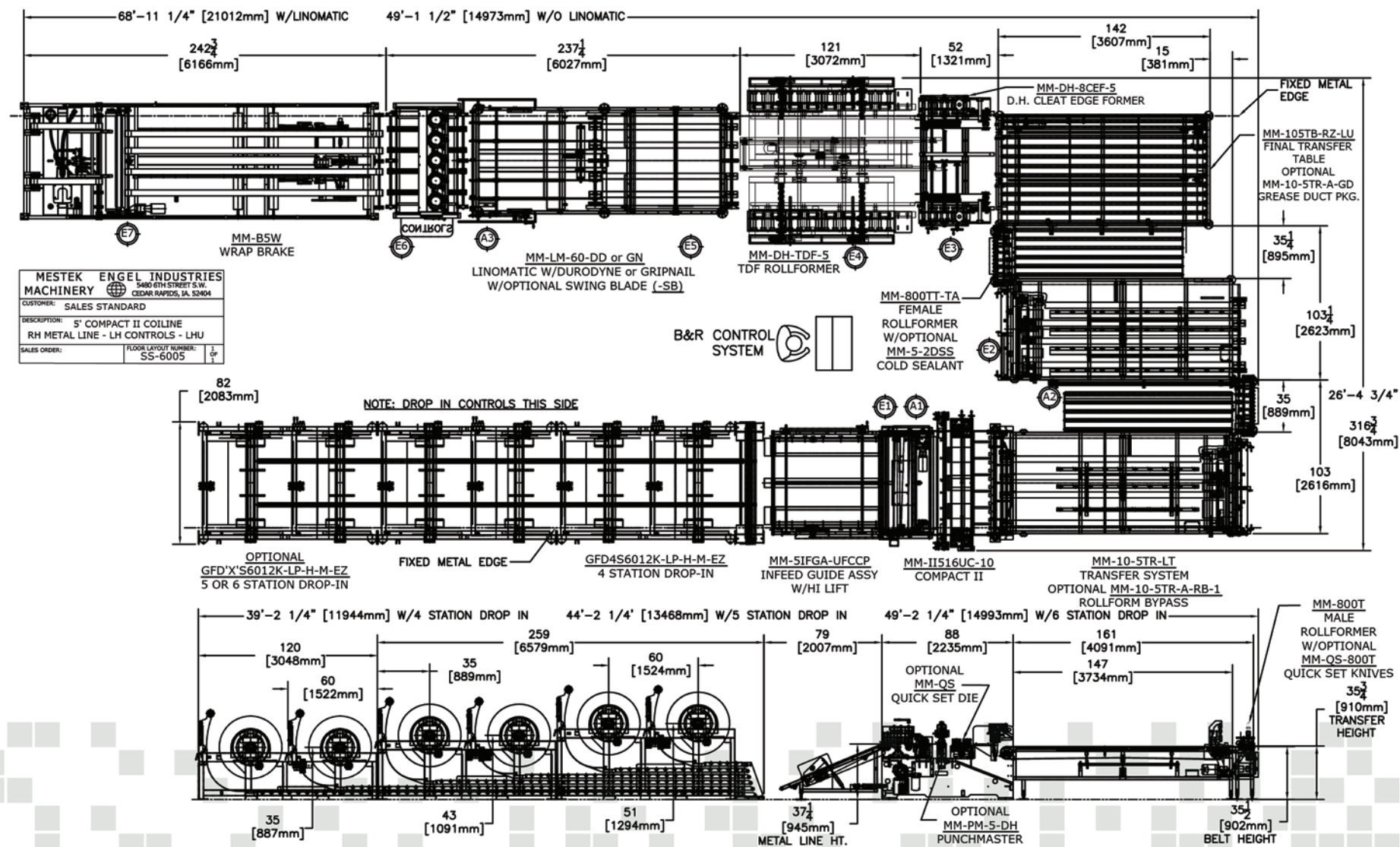
*The Compact II Starter Coiline combines equal parts evolution and innovation. We have developed this full coiline specifically for the HVAC industry that is built to last longer, produce more and deliver the highest levels of quality and value.*



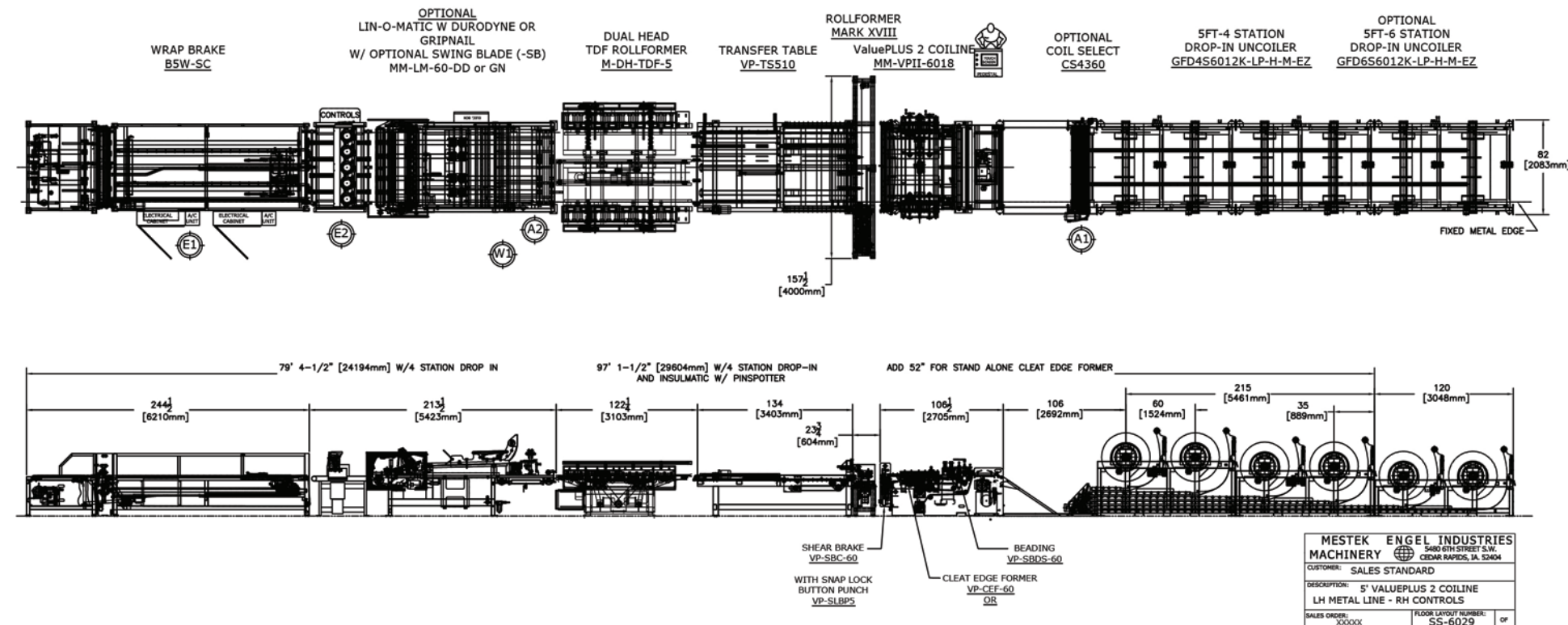


*Most economical footprint in the world and fastest feed rate in the industry!*





Layout in either "U" (shown) or "Z" arrangement



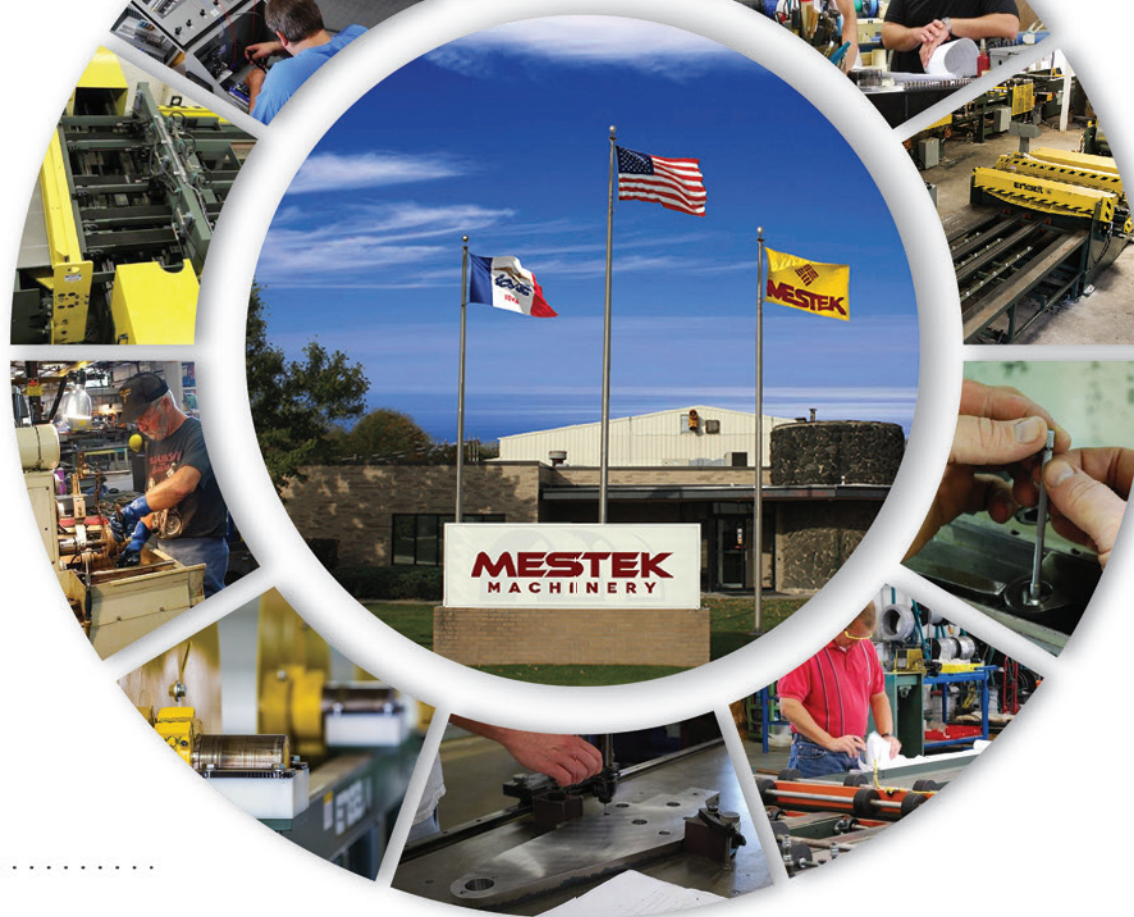
Plus, we always design in the capability to add on to make this system a complete Automated Duct Line



# Our Coilines...

## Why they're better than the competition

- Construction of equipment is highly engineered to eliminate clutter and decrease opportunities for failure
- Very quiet system with low-profile features and benefits
- Precision manufacturing eases assembly of precision components, especially fittings
- Automation ensures consistency in size, shape of duct
- Delivers consistency and accuracy of seams and joints
- Reduces leaks, creates uniform seal
- Software is written, produced and serviced from over 30 years of experienced Engel programmers
- Industrial controller is the most rugged in the industry
- Engel has over 15 service technicians along with local technicians

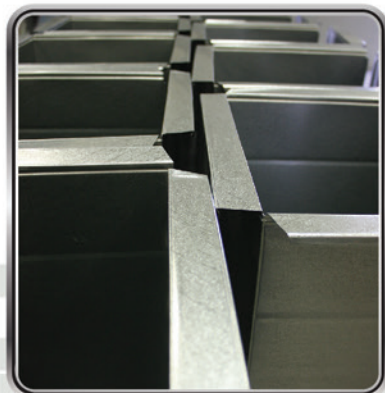


## Company Info

### Mestek Machinery

*We have been, and intend to remain, the market leader in HVAC sheet metal equipment and solutions for duct shops and fabricators. Our many long-term relationships with sheet metal contractors and our huge installed base are very valuable to us, a resource for our marketplace, and a testament to our reliability and industry focus. We operate our businesses with a*

*long-term outlook and we're not going anywhere but forward. We're only human, so our people and our systems are not perfect and given the hundreds of thousands of interactions and tens of thousands of pieces of equipment, we may miss the mark from time to time, but we constantly evaluate our people, our systems, our tools and our customer service attitudes to deliver satisfaction. Please give us the chance to help you maintain and repair your Lockformer, Engel, Iowa Precision and Lion duct shop equipment with genuine factory designed, manufactured and tested repair parts. You'll be glad that you did!*



*Since 1938, Mestek has helped shops like yours get the job done*