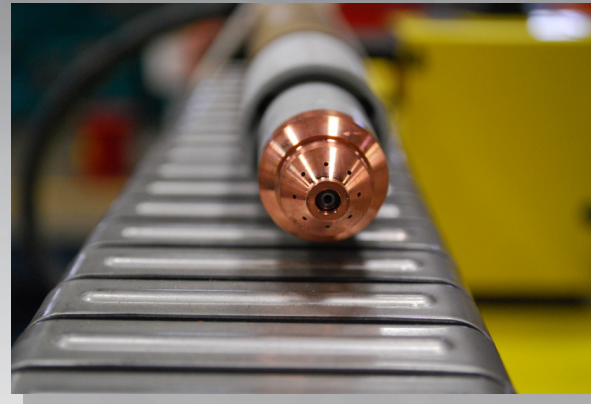


HYPERTHERM® POWERMAX45:

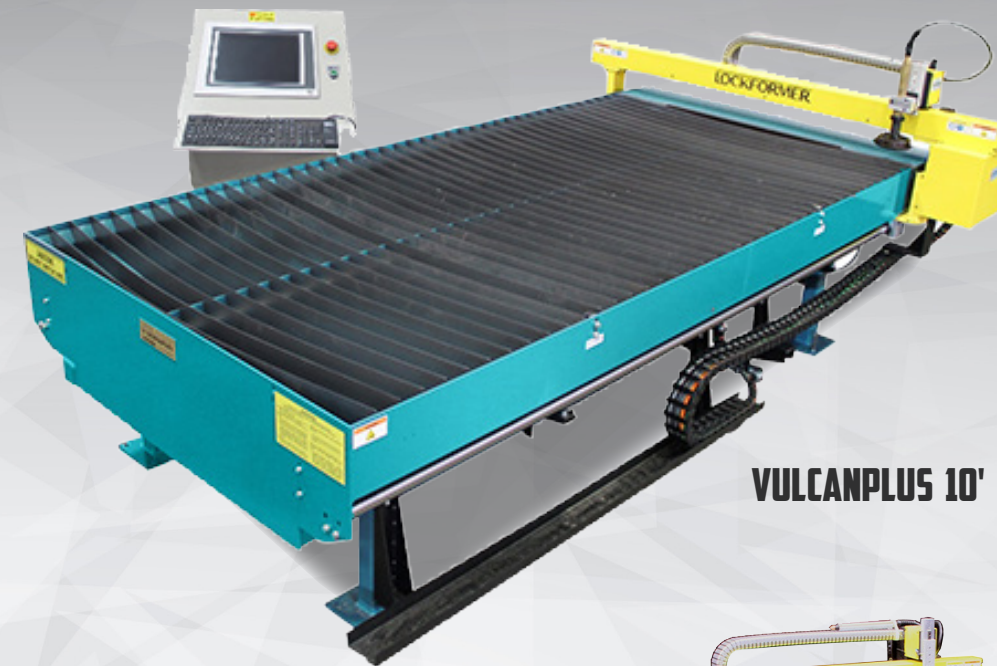
- 50% duty cycle at 45 amp output
- Solid-state inverter power supply with output variable from 20 to 45 amps optimum performance on thickness' from 28 gauge to 1/4" metal
- Conical Flow nozzle increases arc energy density for superior cut quality with little dross
- Patent Pending shield reduces dross buildup and enables smoother drag cutting for a better cut.
- Hypertherm-shielded nozzle design to increase consumable life
- Universal power supply 220V AC single phase power supply
- CNC Interface and Fast Connect Torch Connection increases versatility.
- Power-cool design cools internal components more effectively for greater system reliability and improved uptime.



- Full 3 year power supply warranty and a 1-year torch warranty.
 - 3/8" Maximum Cutting Ability
- Powermax65 available as an option*

LOCKFORMER

since
1938



VULCANPLUS 10'



VULCANPLUS 20'

SOFTWARE & COMPUTER INCLUDES:

- Rectangular, Drop cheek, Square to Round
- Round & Oval complete
- Super & Manual segmenting
- Automatic Shape Nesting and Rotational nesting for minimum scrap
- Holes cutting in fittings/round/slot/square/oval
- 3-D picture preview and flat pattern layout
- Splitter vanes
- Rod re-enforcing holes cut in fitting
- Insulating cutting software
- Vulcan Parts (special shape CAD program)
- Two User Input Station License
- Easily Create and Customize , Color Coded Labels and Reports
- Microsoft Windows 7 Operating System
- Two printers

VULCANPLUS® CUTTING SYSTEM



5480 - Sixth Street S.W. • Cedar Rapids, IA 52404
Email: sales@mestekmachinery.com • Website: mestekmachinery.com
319.364.9181



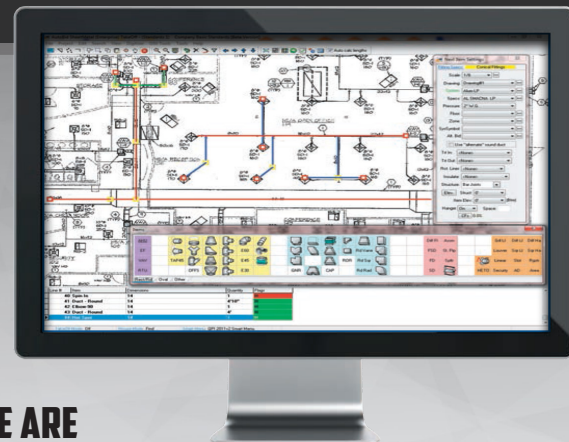
The FIRST Premier Partner Program Member
to Join this Elite Group



INDUSTRY LEADING VULCAN CAM SOFTWARE

Increase your shop's productivity and profits with software that has been the industry standard for 30 years.

Vulcan software makes you work more productive whether you have five or fifty people in your shop. Fitting input is quick, simple, and non-repetitive. Create customized, color-coded labels and reports easily.



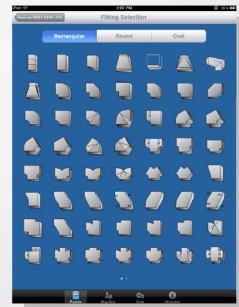
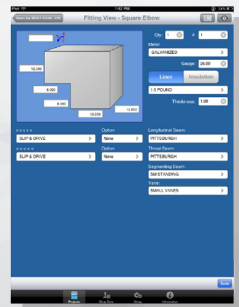
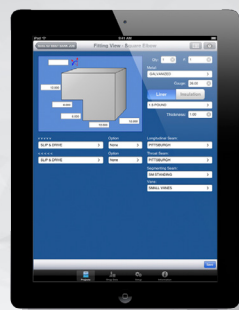
FEATURING:

- Comprehensive Fitting Libraries
- Automatic Shape Nesting
- Customized Color Labels
- Accessories
- Automatic Segmenting
- Manual Segmenting
- Dampers
- Reinforcing
- PDA and Tablet Compatibility

THE CAD PROVIDERS WE ARE

CURRENTLY OPEN IN ARCHITECTURE WITH ARE:

- Autodesk CAD MEP
- TSI Sysque
- East Coast Cad
- Cad Pipe
- Draw Tech
- Web Duct
- Others upon request



ADDITIONAL OPTIONS:



**Optional Plasma Coil Feed is available*

SERVICE & FINANCING:

- We have 12 month service plan available
- Equipment financing is available

VULCANPLUS® CUTTING SYSTEM SPECIFICATIONS

Note: Configurations vary based upon equipment and options selected System

- All Premium "plug-in" components
- Fixture welded, 3" x 3" steel tubing framework
- Stand-alone control console
- All axis home positioning using motor torque measurement
- 8" x 8" steel table leg pads with leveling feature

MACHINE CONTROL:

- B&R Machine Controller built for demanding industrial duty applications
- Lockformer 759 CNC-TS control system with 15" color graphic industrial touch screen
- Windows 7 VS Control software architecture
- Digital drive devices
- Manual speed increase/decrease override
- Kerf compensation
- Auto home sense to set 0/0 automatically
- Automatic corner slow down
- Brushless AC servo motors with resolver feedback
- Remote safety stop switches and current limiting drives for safety

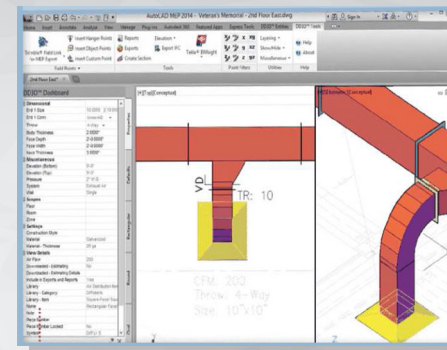


TABLE:

- 1/4" steel plate table perimeter
- 3" x 16 ga. CRS, multi-directional X or Y sheet support slats
- Slats can be configured for either "side-load" or "endload" of the table
- Exclusive Gull-Wing table design
- Rectangular exhaust plenum at the back end of the table for easy access connection
- 10" x 12" table exhaust ducting of 20 gauge galvanized TDC four bolt connector
- Strategically located Emergency Stops [1 = controller; 1 = x-axis carriage]
- 3 surface milled "L" bracket sheet stops



DRIVE:

- Dual Y drive
- Double deck, 24 strand steel, precision reinforced radial timing belts
- HIWIN® linear x-axis bearing and way
- 3" diameter x 128" long, turned, ground & polished Y-axis guidance rail
- Precision cam followers
- X-axis brush guard
- Steel enclosed housing for X-axis servo drive motor



VulcanPlus®
Cutting System
Specifications