

# the ***LOCKFORMER***

**EASY - EDGER**

**INSTRUCTIONS and PARTS DIAGRAM**

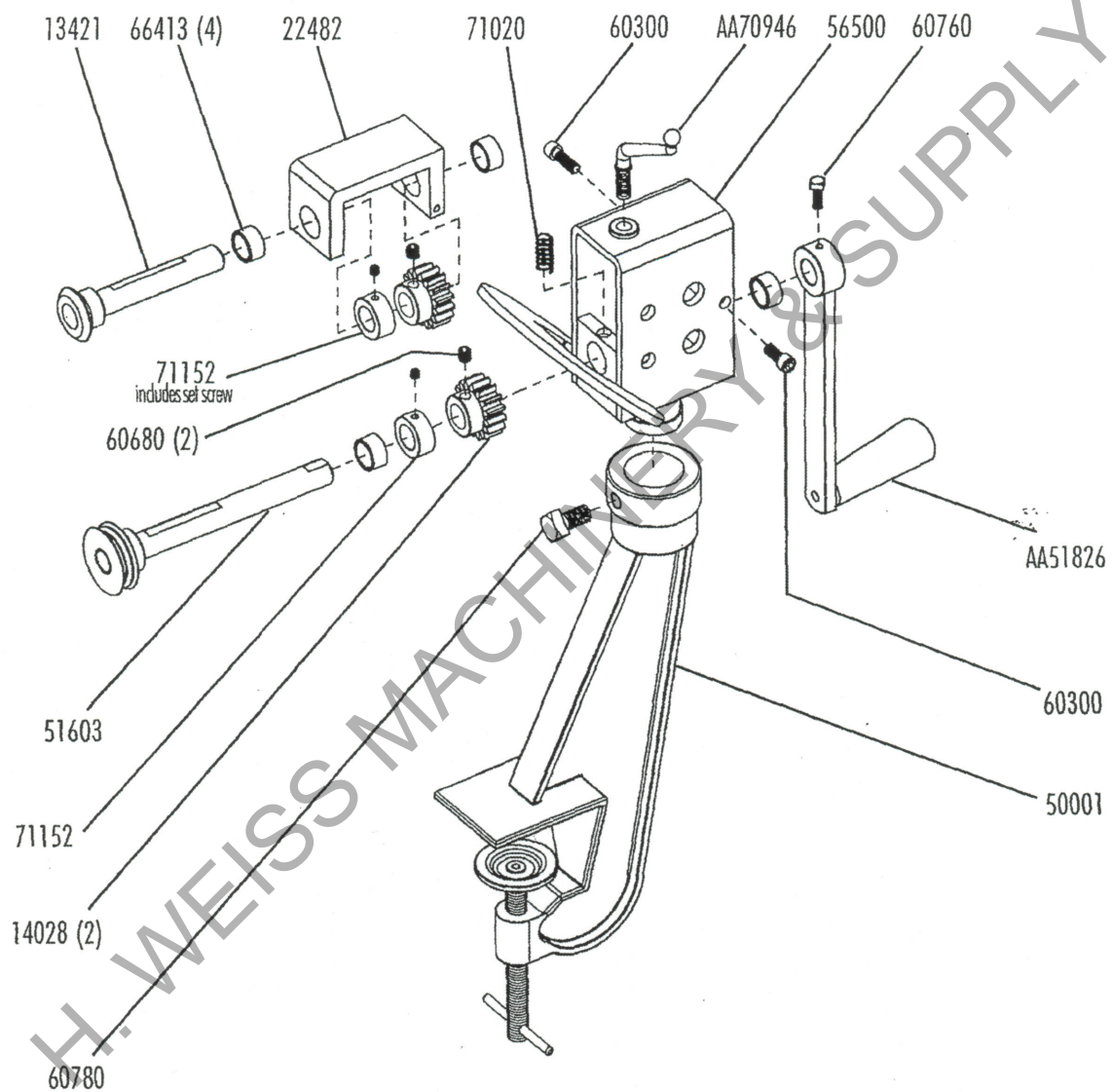


**THE LOCKFORMER COMPANY**

**H. WEISS MACHINERY & SUPPLY**

**PHONE: (718) 605-0395**

## Easy Edger Illustrated Parts Breakdown





## Assembly / Installation

Provide a clean, flat, well lighted installation site. Install the stand assembly (50001) onto a solid, level surface such as a workbench top. Insert the base of the housing assembly into the top of the stand. Standard installation is as shown on the cover photo. (The housing may be rotated to any position). Firmly tighten the square head set screw (60780). Install the crank handle assembly (AA51826) onto the drive shaft and secure with the set screw (60760). Remove debris that may have accumulated during shipping or installation.

## Operating Instructions

### ROLL CLEARANCE ADJUSTMENT

Tighten the adjustment handle (AA70946) until snug, then loosen one quarter turn. Place the edge of the material to be formed against the groove in the lower forming roll. Turn crank arm assembly and push stock into the rolls and stop. Set adjustment handle just tight enough to draw material and form a square corner. Machine is now ready for continuous operation of the gauge it is now set for.

NOTE: On exceptionally small radiused curves, the edge may wrinkle. If this occurs, run through the bending process again.

CAUTION - The edge of the material must set against groove in lower forming roll to obtain a satisfactorily formed flange of correct height. An irregular height or heavily wrinkled flange may be caused by improper pressure.

The maximum capacity of the Easy Edger is 20 gauge cold rolled steel.

### MAINTENANCE

Keeping the forming rolls clean is an important step toward efficient operation of your machine. Lockformer's GALV-OFF aerosol spray cleaner will soften galvanized build up so that it flakes off. Daily use is recommended to prevent harmful deposits from building up. GALV-OFF cleans and lubricates, as well as protects the surfaces of the forming rolls. After every 40 hours of operation, apply a coating of grease to the drive gears.

### Easy Edger Parts List

PART NUMBER	DESCRIPTION	QUANTITY
13421	Top Roll Shaft	1
14028	Gear	2
22482	Top Bearing Bracket	1
50001	Stand Assembly, Easy Edger	1
51603	Bottom Roll Shift Assembly	1
56500	Housing Assembly	1
60300	SHCS, 1/4- 20X 3/8	2
60680	SSS, 3/8- 16X 3/8	2
60760	SQHSS, 5/16- 18X 5/8, Cup Point	1
60780	SQHSS, 1/2- 13X 1, Cup Point	1
66413	Oilite Sleeve Bearing, A-912-12	4
71020	Compr. Sprg, SG117, .06/.062 Wire	1
71152	Color-Shaft, #1506, #SC75, 3/4ID	2
85154	Nameplate, Easy Edger	1
AA51826	Crank Arm Assembly, Easy Edger	1
AA70946	Handle, Adj., 1/2- 13X 1.2 Stud	1